

Human Health Activities, Measurement of Output and Turnover

29th Voorburg Group Meeting, Dublin

25 September 2014

Kati Heikkinen

Content

- Market conditions
- Classifications
- Data sources
- Structural business statistics
- Remarks

Market conditions

- In Finland, the provision of health care is one of the main tasks of municipalities. Private health care services complement public health care service provision. Private service providers, i.e. enterprises, non-governmental organisations and foundations, can sell their services to local authorities, joint municipal authorities or directly to customers.
- Enterprises and non-governmental organisations have begun to provide more and more of Finland's health care services in the 21st century.
- A large amount of private health service providers operate in the large urban areas of southern Finland.
- Private health care providers must be licensed.

Statistical classifications 1/2

- Classification of enterprise size categories
- Classification of Institutional Sectors
- Standard Industrial Classification TOL 2008 - based on NACE rev. 2:
 - same with NACE Rev.2 classification up to the four digit level
 - national five digit level which is the most specific level

Q Human health and social work activities

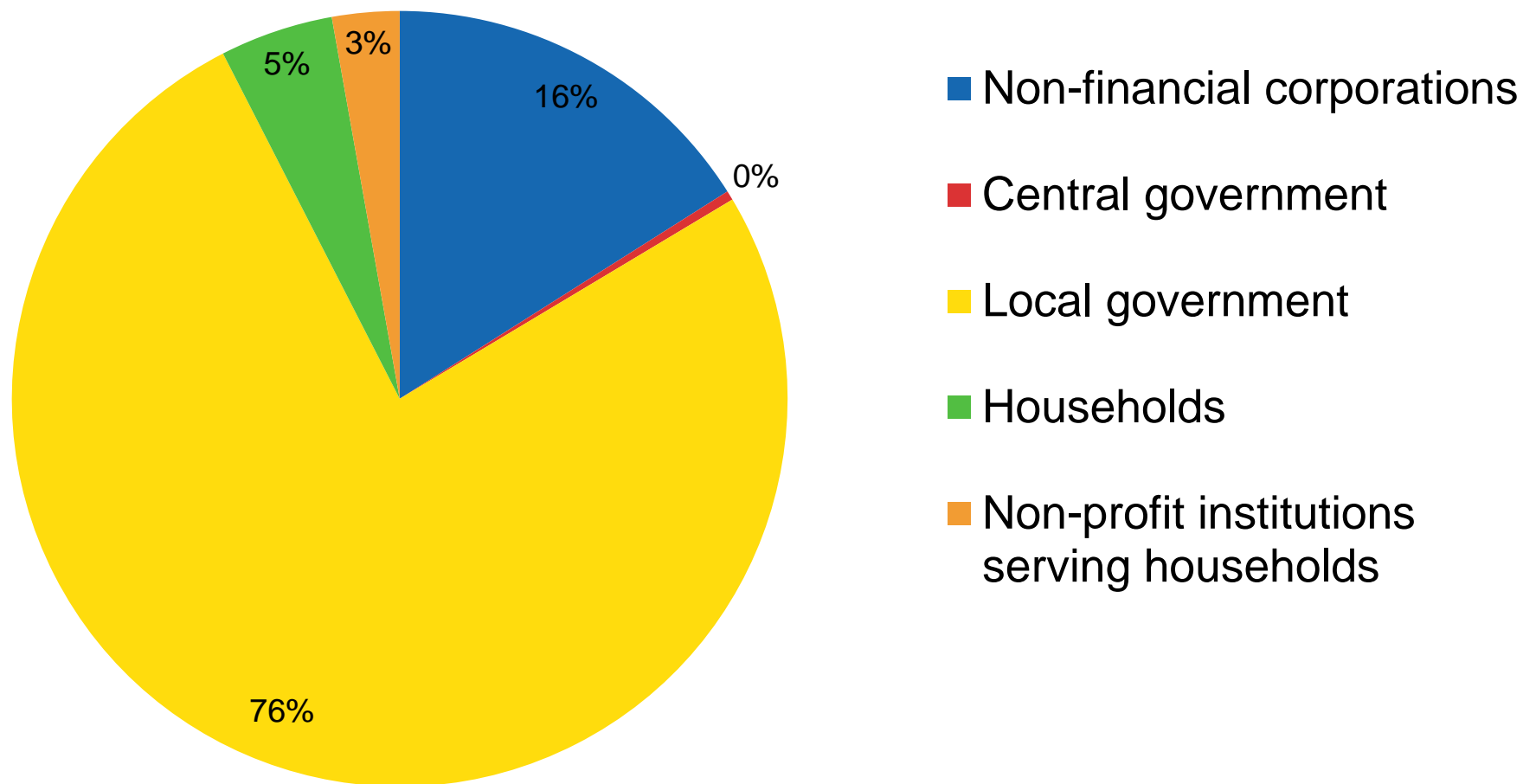
- 86 Human health activities
 - 861 Hospital activities
 - 8610 Hospital activities
 - 86101 Hospital activities proper
 - 86102 Rehabilitation centres and nursing homes
 - 862 Medical and dental practice activities
 - 8621 General medical practice activities
 - 86210 General medical practice activities (incl. mainly municipalities)

Statistical classifications 2/2

- 8622 Specialist medical practice activities
 - 86220 Specialist medical practice activities
- 8623 Dental practice activities
 - 86230 Dental practice activities

- 869 Other human health activities
 - 8690 Other human health activities
 - 86901 Physiotherapy
 - 86902 Laboratory examinations
 - 86903 Diagnostic imaging examinations
 - 86904 Ambulance service
 - 86909 Other health care services

Human health activity (86), Total economy 2012, output at basic prices (current price) according to National accounts



Data sources for measurement of turnover, (non-government)

- Administrative sources
 - Tax authority
 - corporate taxes (6 times per year)
 - value added tax (once in a month)
 - National board of patents and registrations (starts, bankruptcies, official accounts)

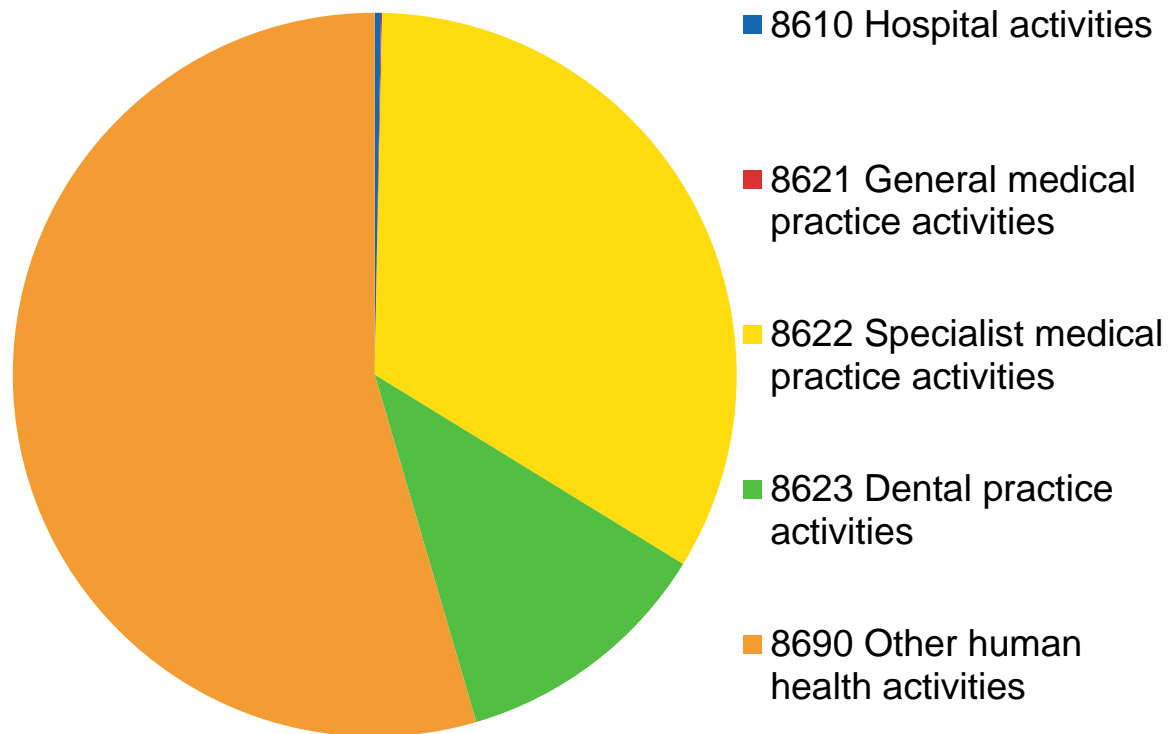
- Statistics Finland's direct inquiry:
 - Structural business statistics questionnaires
 - Subsets of turnover and costs, investments
 - Used for National Accounts

Human health activities

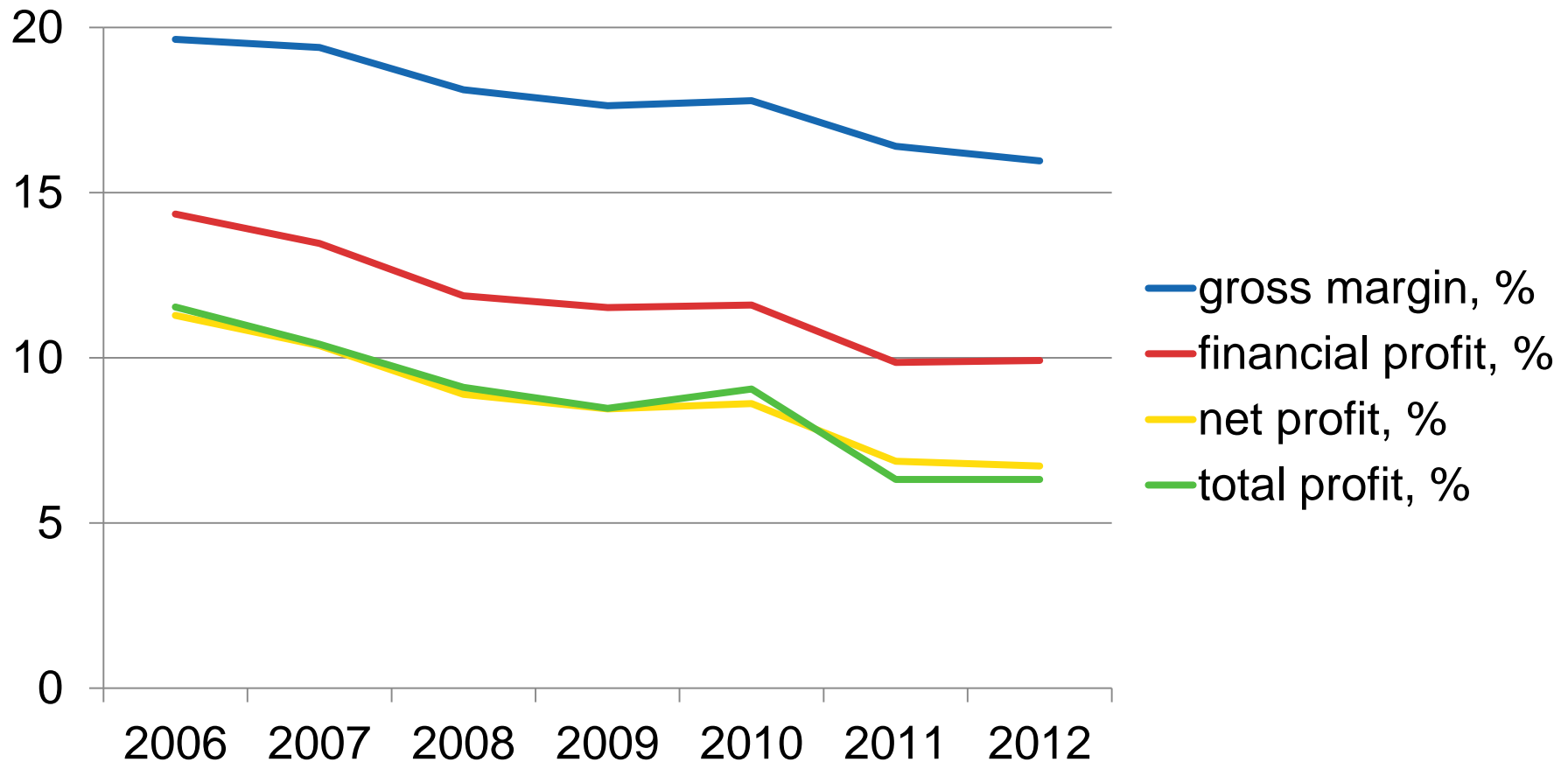
Activity in 2012 (NACE rev. 2, 86):

- 15 304 companies (169 enterprise groups), 16 105 local kind of activity units
- 32 812 employees
 - in which enterprise groups 13 374

Number of enterprises, %



Human health activities in SBS: profit of business activity



Remarks

- Development in business statistics:
 - Renewed production of business statistics: e.g. Business Register and SBS statistics in the same database

- Development in market:
 - The demand for social and health services continues to increase due to ageing of population. In order to meet this demand private services are needed in addition to public ones.